



Lync eNews

Keeping You Connected...

Autumn 2001

in this issue

[Advent-Lync Clients Benefit](#)

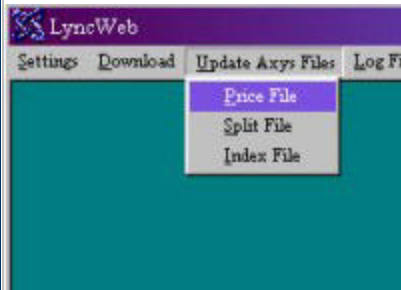
[Gain Competitive Edge with ClearView](#)

[Increase Report Package Generation Efficiency](#)

[Client Spotlight: Pinnacle Associates](#)

[Statistics for PackMan WebReps Now Available](#)

Trial LyncWEB for Web Pricing



LyncWEB is the affordable end-of-day pricing solution for in between reporting

PackMan Version 3.0

[Release Notes](#)

After less than two years on the market, PackMan has earned it's reputation as the most cost effective efficiency tool for streamlining Period-End Report Package generation procedures. [Learn more...](#)

Current Clients can [download PackMan version 3.0](#) from the Lync Support Page.

We pride ourselves in 100% Customer Satisfaction, and would appreciate your participation in the [LyncWare Customer Satisfaction Survey](#).

• Advent-Lync Clients Benefit

Lync and Advent have kicked off a joint campaign to benefit our mutual clients by working together to deliver more complete solutions.

[More about the Lync-Advent relationship...](#)

• Gain Competitive Edge with ClearView

ClearView is the design and development of graphical

periods. Price more often affordably with LyncWEB for a flat annual subscription rate. LyncWEB's internet technology allows Investment Advisory firms to value progress as soon as the market closes.

[Learn More about LyncWEB...](#)

report packages to set your firm apart from it's competition. PackMan ClearView Graphical Reports can consolidate data from multiple sources such as portfolio returns, allocations, long-term goals, and industry analytics in one concise statement of accounts that is easy to read and reinforces the "brand" or style the firm has worked so hard to create.

[Full Article](#)

[Find out more about ClearView](#)

• **Increase Report Package Generation Efficiency**

PackMan Webinars are designed as an open forum for current clients, prospects, and interested parties to share ideas on how PackMan helps alleviate the pains of Period-End Report Generation Processes. Join the LyncWare Technical Support Team online with WebEx technology to learn new ways to best utilize PackMan to streamline your business.

[Register for a FREE PackMan Webinar](#)

• **Client Spotlight: Pinnacle Associates**

Lync PackMan clients rave about the improved period-end-report generation process. Each quarter we will share one of their success stories in the Client Spotlight. If you are a satisfied customer and are interested in sharing your success stories in the next eNews, please send submissions to the Lync Technical Support Team.

[PackMan Increases Efficiency at Pinnacle Associates](#)

• **Statistics for PackMan WebReps Now Available**

Lync Consulting - Consulting and Software Technology for the Financial Industry

[eMail](#)

[Visit our Site](#)

phone: (212) 971-9299

This email was sent to
mchumash@lync-consulting.com,
at your request,
by [Lync Consulting](#).

Visit our Subscription Center
to [edit](#) your interests or
[unsubscribe](#).

View our [privacy policy](#).

Lync is proud to announce a service upgrade to our PackMan WebReps customers - Statistics Server. Statistics Server is a powerful analytical tool which allows WebReps clients access to usage data on their secure WebReps site. This product add-on becomes standard for new and renewal clients after January 1st, 2002.

[Download a sample Statistics Server Summary Report](#)